



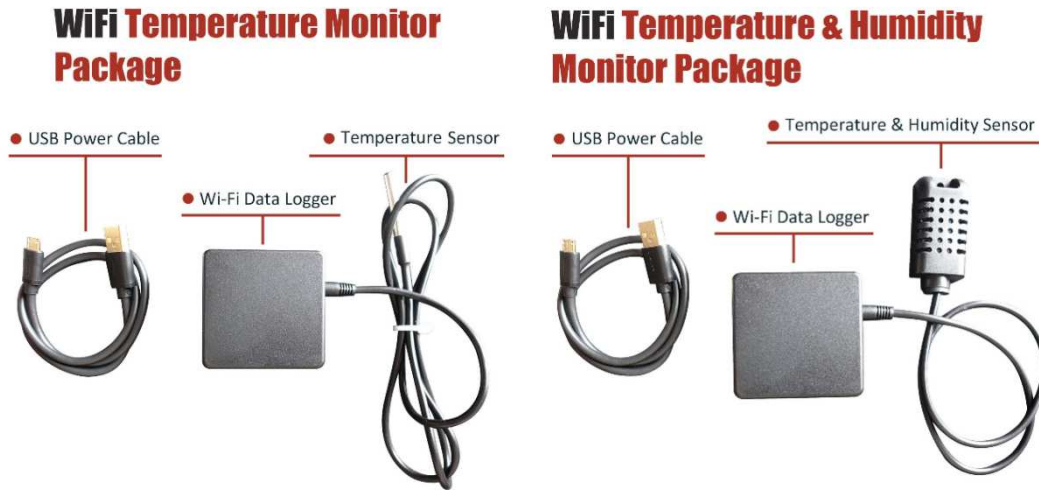
User Manual

Wi-Fi Temperature&Humidity Monitor (WTH3080)



OCT, 2017

1. Standard Inclusion



2. WiFi Setup



Step1, Use your smart device's Wi-Fi connection setup, connect to the Monitor's network, which will show up as eMonitor_xxxxxxx (xxxxxxx is unique device SN). No password required.

Step2, Whilst connected to the eMonitor's network, open a web browser and navigate to <http://11.11.11.1>; Enter the username "admin" and password "admin".

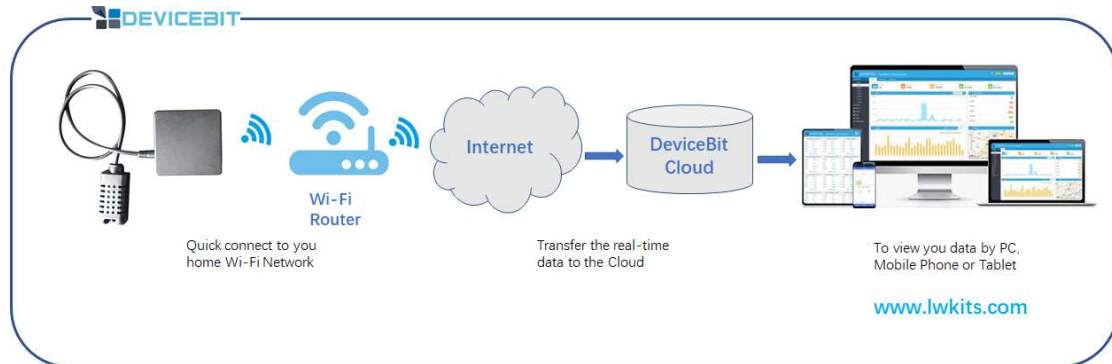
Step3, Connect to home router by clicking "WiFi Networks" or manually input home router's SSID (your home Wi-Fi networks' SSID) and Key (your home Wi-Fi networks' password) and then click "Save&Reboot"

Note: After your device connected to your home router, the monitor's Wi-Fi network is disappeared for security reason. You can find the Wi-Fi monitor in your

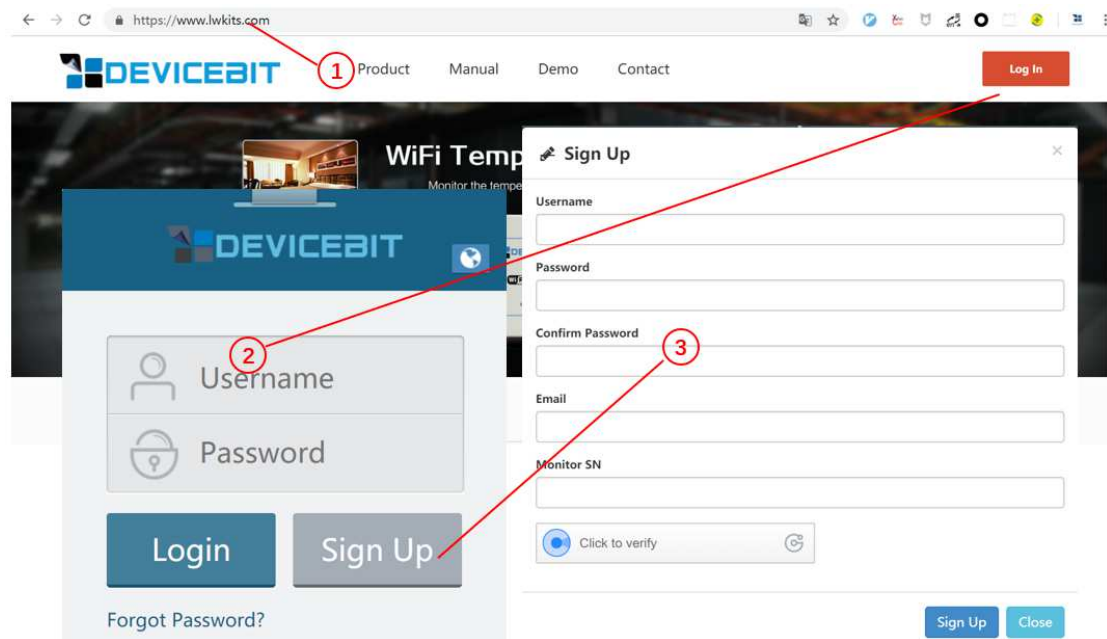
PC's network under same WiFi network, which will be shown up as eMonitor_xxxxxxx too.

3. Monitor on DeviceBit Cloud

3.1 How it works



3.2 Sign up

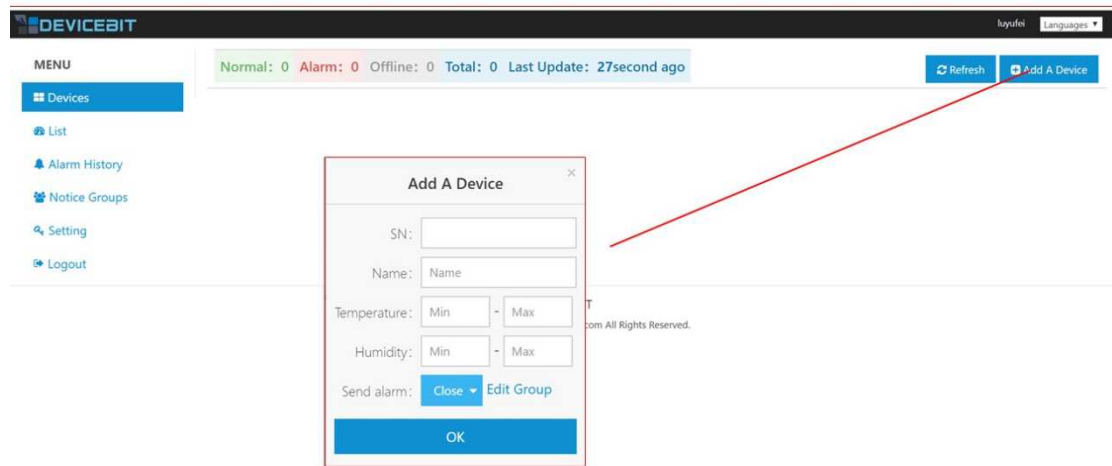


Step1, Visit the dedicated web portal for temperature and humidity monitoring: <https://www.lwkits.com>, click "Log in", and the login page is shown

Step2, Click "Sign up", fill up the information on sign up page, enter the Monitor SN.

SN: Serial Number is unique ID of your Monitor, it is a combination of 8 digits or letters. The WiFi network of Monitor shows up as "eMonitor_xxxxxxx" and "xxxxxxx" is the SN.

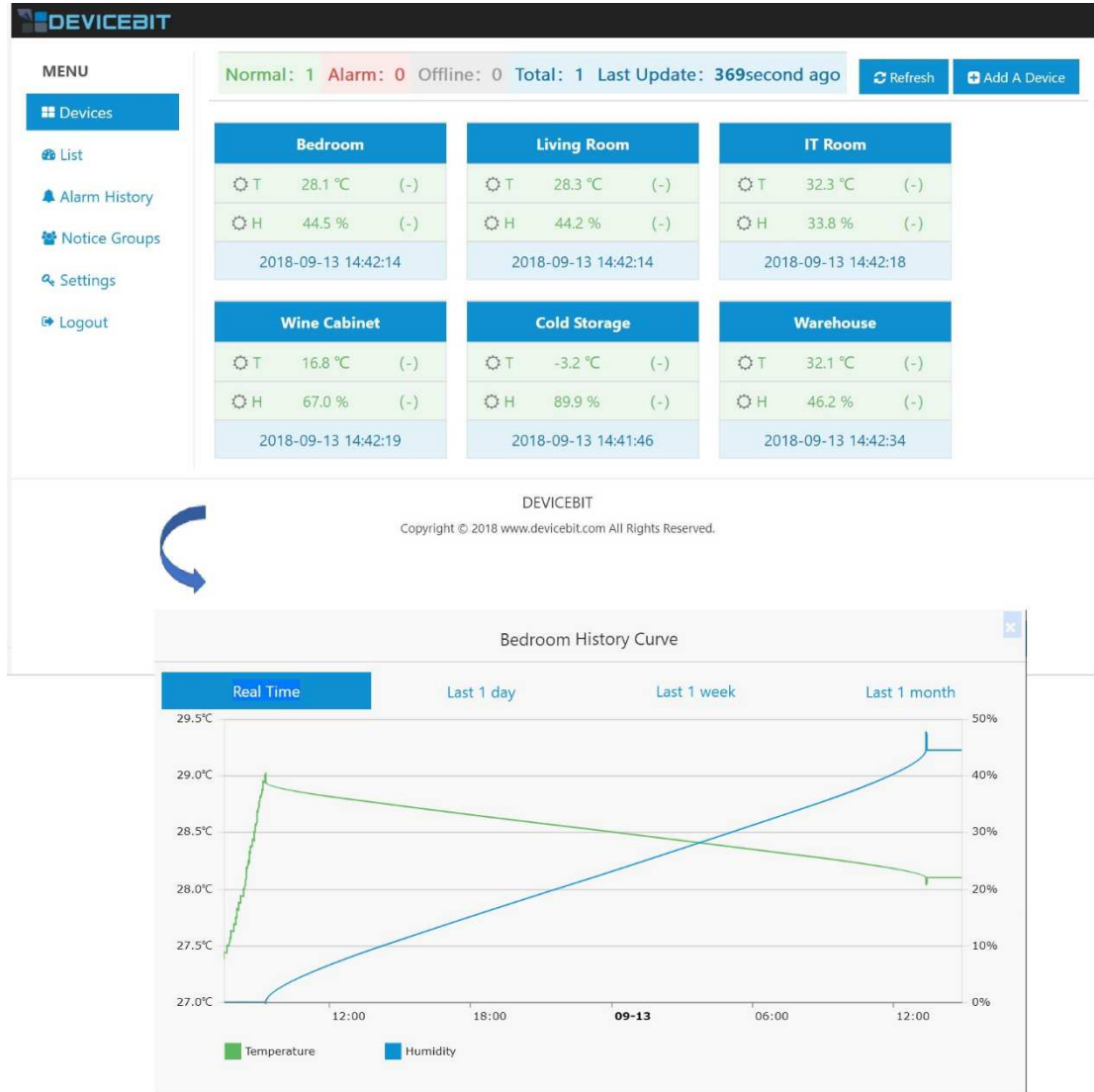
3.3 Add your monitor



Login and click "Add A Device". SN and Name must be filled. Normal Value Range and Alarm Sending is optional to be filled.

3.4 View the data on web portal

After a while, you can view you data on DeviceBit.



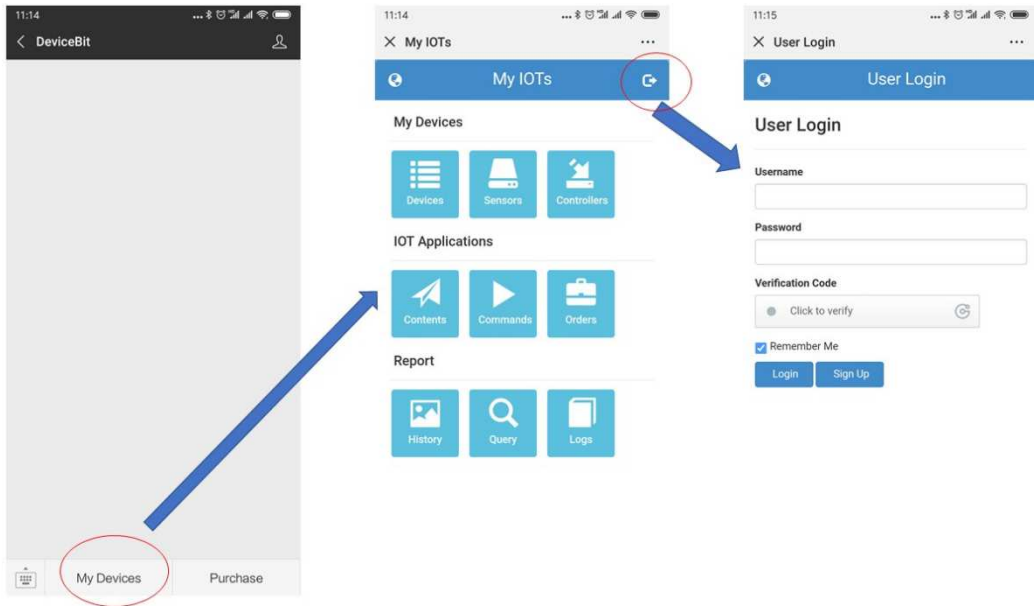
3.5 View the data on WeChat

You can also view data on WeChat by following DeviceBit WeChat ID.

Step1, Scan the below QRcode to follow:



Step2, Login via WeChat by following steps



Step3, View your data on WeChat

