



DataSheet

Wi-Fi Solar Inverter Data Logger (WE3162/WU3162)



OCT, 2017

1 General Specification

Specification	Description
Power Supply	DC 5V-16V
Network	2.4G Wi-Fi
Antenna	Built-in PCB antenna, or IPEX external antenna
Reporting interval	5 minutes by default
Configuration	Wi-Fi access point and webpage for setting SSID and password
Communication Port	RS485/422/232
UART Parameters	9600/8/n/1

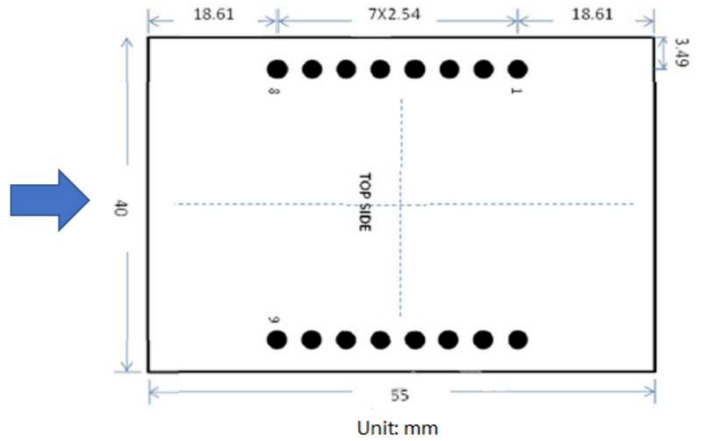
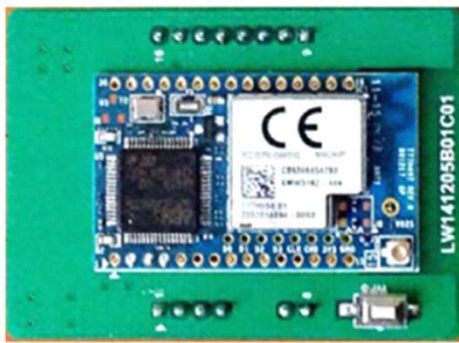
2 Electrical Characteristics

Specification	Description
Input Voltage	5V-16V DC
Input Power	> 1VA
Working Voltage	3.3V DC
Working Current	< 80mA (Working Mode) < 30 μ A (Sleep Mode)

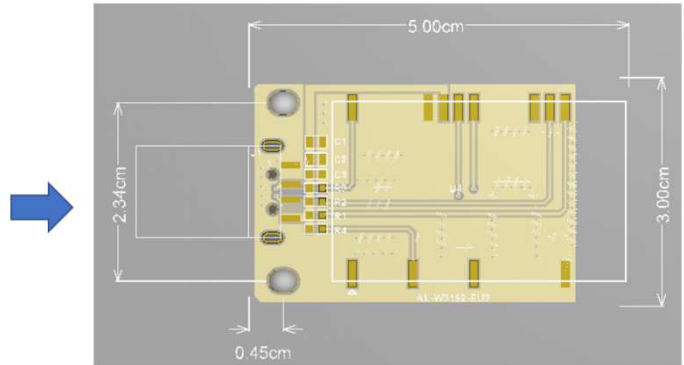
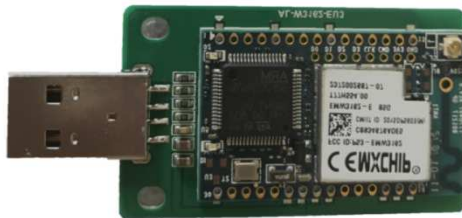
3 Mechanical Characteristics

Specification	Description
Package Weight	0.1kg
Dimension	Refer to below description

Dimension of WE3162 (Embedded Version)



Dimension of WU3162 (USB Plug Version)



4 Environmental Conditions

Specification	Description
Operating Temperature	-10-70°C
Operating Humidity	10%-90%RH (without condensation)
Storage Temperature	-40-80°C
Storage Humidity	5%-90%RH (without condensation)

5 Wi-Fi Network

Specification	Description
---------------	-------------

Specification	Description
WLAN	Channel:Auto Security:WPA2-PSK
SSID	To be customized
Configuration page	URL: http://11.11.11.1 , Username:admin, Password:admin

6 Wi-Fi Parameters

Specification	Description
Wi-Fi Mode	IEEE802.11b/g/n, Wi-Fi Channel 1-13
Transmit power	18.5dBm@11b, 15.5dBm@11g, 14.5dBm@11n;
Wi-Fi Frequency	2.400~2.472GHZ
Transmit Speed	3686400bps at highest speed
Maximum Connections	8
Wi-Fi Antenna	Built-in PCB antenna, or IPEX external antenna

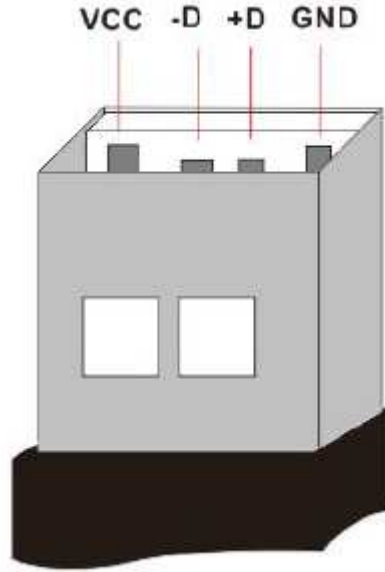
7 Pin Description

WE3162 (Embedded Version)

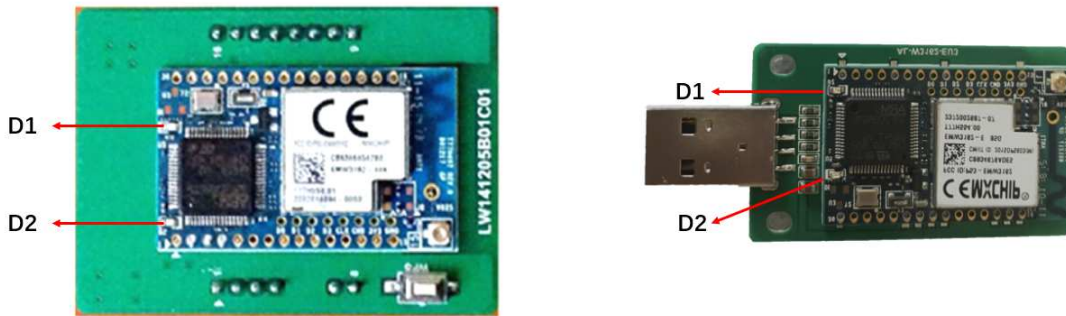
Pins	Name	Type	Description
1	GND	Ground	Ground
2-7	NC		
8-9	GND	Ground	Ground
10	TXD	Out	Output signal
11	RXD	Input	Input Signal
12-14	NC		
15	GND	Ground	Ground
16	VCC	Input	Power Input

WU3162 (USB Plug Version)

TEL: +86 010 52981332 Email: support@devicebit.com



8 LED



Name	Color	Function
D1	Green	Always on: The module is successfully initialized; Always off: The module initialization is failed / enters sleep mode; Flashing: Firmware upgrade mode
D2	Red	Always on: Wi-Fi is connected; Always off: Wi-Fi is not connected; Flashing: Data transmission