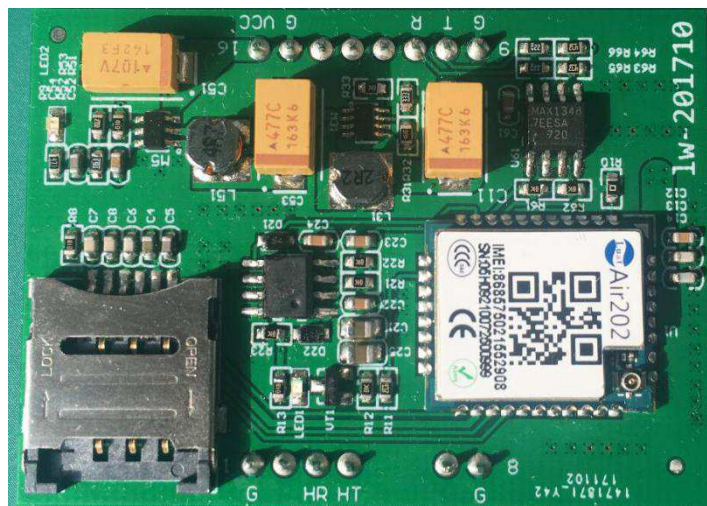




DataSheet

GPRS Solar Inverter Data Logger (GE8955)



OCT, 2017

1 General Specification

Specification	Description
Power Supply	DC 5V-16V
Network	900M/1800M GPRS network
Antenna	IPEX3 external antenna
SIM Card	Micro SIM card
Reporting interval	5 minutes by default
Communication Port	TTL or RS485 optional
UART Parameters	9600/8/n/1
Support Protocol	TCP/UDP/DNS/ARP

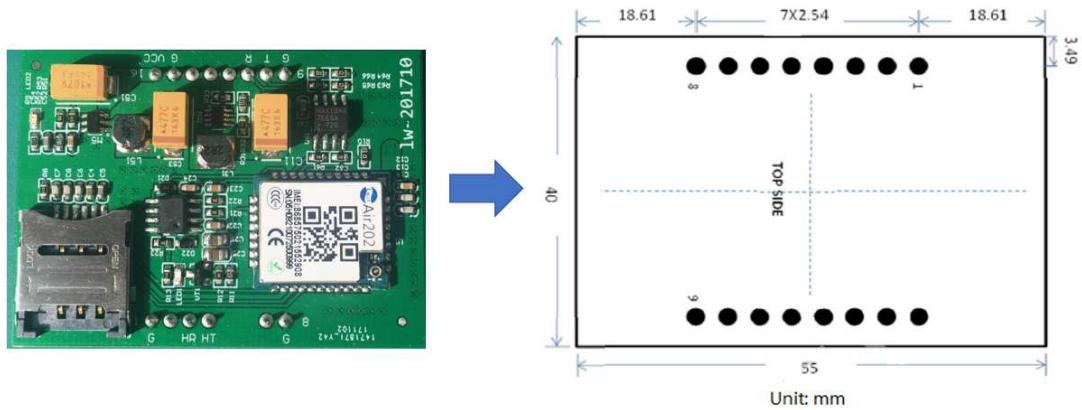
2 Electrical Characteristics

Specification	Description
Input Voltage	5V-16V DC
Working Voltage	3.3V DC
Working Current	< 180mA (Working Mode) < 100 μ A (Sleep Mode)
Instantaneous Peak Current	1.6A

3 Mechanical Characteristics

Specification	Description
Package Weight	0.1kg

Specification	Description
Dimension	Refer to below picture

Dimension of GE3162


4 Environmental Conditions

Specification	Description
Operating Temperature	-40-85°C
Operating Humidity	10%-90%RH (without condensation)
Storage Temperature	-40-80°C
Storage Humidity	5%-90%RH (without condensation)

5 GPRS Parameters

Specification	Description
Frequency Band	Quad-Band 850/ 900/ 1800/ 1900 MHz
GPRS Class	12
Coding Scheme	CS1,2,3,4
Transmit Power	Class 4 (2W): GSM850 and GSM900

Specification	Description
	Class1 (1W): DCS1800 and PCS1900
GPRS Antenna	IPEX3 external antenna

6 Pin Description

Pins	Name	Type	Description
1	GND	Ground	Ground
2-7	NC		
8-9	GND	Ground	Ground
10	TXD	Out	Output signal
11	RXD	Input	Input Signal
12-14	NC		
15	GND	Ground	Ground
16	VCC	Input	Power Input